

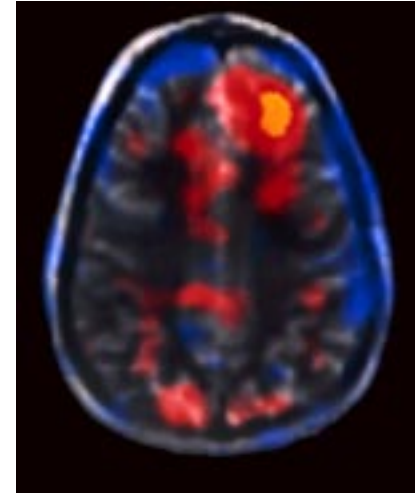
(Color Harvard)



Harvard Medical School  
Department of Continuing Education

(Color  
JPNM  
LOGO)

# CLINICAL NUCLEAR MEDICINE 2002



**April 29-May 2, 2002**

The Charles Hotel  
Cambridge, Massachusetts, USA

**Program Director**  
S Ted Treves, MD

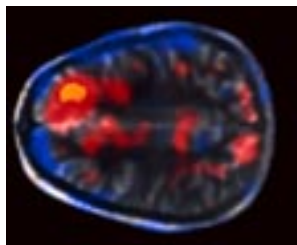
**Associate Program Director**  
Leonard P Connolly, MD

**Program Chairman**  
S James Adelstein, MD, PhD

## The Joint Program in Nuclear Medicine

Beth Israel Deaconess Medical Center  
Brigham and Women's Hospital  
Children's Hospital  
Dana-Farber Cancer Institute  
Massachusetts General Hospital  
VA Boston Healthcare System

Harvard MED-CME  
PO Box 825  
Boston, MA 02117-0825



Clinical Nuclear Medicine  
April 29-May 2, 2002

# Clinical Nuclear Medicine 2002

## OBJECTIVE

The 26th annual course will review established and emerging applications of nuclear medicine. Attendees will enhance their knowledge and skills in ways that can be immediately applied to clinical decision making. The course will enable participants to improve their performance and interpretation of nuclear medicine studies and to introduce important new techniques into their clinical practices.

## COURSE DESCRIPTION

National guest faculty and members of the Harvard Joint Program in Nuclear Medicine will update physicians, scientists, and technologists on valuable techniques that can be immediately applied to the clinical practice of nuclear medicine. Attendees will gain insight into clinical challenges from recognized leaders in the field through a combination of lectures and interactive case-oriented review sessions.

Topics will include assessment of myocardial perfusion and function, pulmonary embolism diagnosis, oncologic nuclear medicine, detection of infection and inflammation, renal scintigraphy, gastrointestinal and hepatobiliary imaging, skeletal scintigraphy, PET, nuclear thyroidology, and brain SPECT. Practical considerations regarding image interpretation, optimization of imaging techniques, and the role of nuclear medicine relative to other imaging modalities will be emphasized.

April 29-May 2

## ACCREDITATION

Harvard Medical School is accredited by the Accreditation Council for Continuing Medical Education (ACCME) to sponsor continuing medical education for physicians.

Harvard Medical School designates this educational activity for a maximum of 24.5 hours in category 1 credit towards the AMA Physician's Recognition Award. Each physician should claim only those hours of credit that he/she actually spent in the educational activity.

Technologists: Category 1 AMA credits are recognized as Category A credits by the American Registry of Radiologic Technologists (ARRT).

## ONLINE INFORMATION

View course information on line. Visit Harvard Medical School Department of Continuing Education's home page:

<http://www.cme.hms.harvard.edu>

Learn more about The Joint Program for Nuclear Medicine (JPNM). Visit the JPNM Web site:

<http://www.jpnm.org>

## REGISTRATION

Monday, April 29, 2002  
7:00 am

Staff from the Brigham and Women's Hospital Department of Radiology Continuing Medical Education Office will be available throughout the meeting to provide assistance.

# FACULTY

---

## GUEST FACULTY

**Naomi Alazraki, MD:** Professor of Radiology, Emory University School of Medicine; Codirector, Nuclear Medicine, Chief, Nuclear Medicine, VA Medical Center, Atlanta, GA

**Alexander Gottschalk, MD:** Professor of Radiology, Michigan State University, East Lansing, MI

**Jamshid Maddahi, MD:** Professor of Molecular and Medical Pharmacology and Radiological Sciences, UCLA School of Medicine; Director, Cardiac Imaging, Nuclear Medicine and Clinical PET, Biomedical Imaging Institute, Los Angeles, CA

**Christopher J Palestro, MD:** Professor of Nuclear Medicine and Radiology, Albert Einstein College of Nuclear Medicine; Director, Nuclear Medicine, Long Island Jewish Medical Center, New Hyde Park, NY

**Rachel A Powsner, MD:** Associate Professor of Radiology, Boston University Medical School; Section Head, Nuclear Medicine, VA Boston Healthcare System

**Martin P Sandler, MD:** Professor of Radiology and Medicine, Vanderbilt University; Chairman, Radiology and Radiological Sciences, Vanderbilt University Medical Center, Nashville, TN

**Barry A Siegel, MD:** Professor of Radiology and Medicine, Washington University School of Medicine; Director, Division of Nuclear Medicine, Mallinckrodt Institute of Radiology, St Louis, MO

**Andrew Taylor, MD:** Professor of Radiology, Emory University School of Medicine; Codirector, Division of Nuclear Medicine, Emory University Hospital, Atlanta, GA

**Ronald Van Heertum, MD:** Professor of Radiology, College of Physicians and Surgeons, Columbia University; Vice Chairman, Department of Radiology, Director, Division of Nuclear Medicine, Director, Kreitchman PET Center, New York Presbyterian Hospital, New York, NY

**Richard Wahl, MD:** Professor of Radiology, Johns Hopkins University School of Medicine; Director, Nuclear Medicine, Johns Hopkins Out Patient Center, Baltimore, MD

**Jack A Ziffer, MD, PhD:** Associate Professor, Biomedical Engineering, Florida International University; Director, Cardiac Imaging, Miami Cardiac and Vascular Institute, Medical Director, Nuclear Medicine, Baptist Hospital, Miami, FL

## HARVARD MEDICAL SCHOOL FACULTY

**S James Adelstein, MD, PhD:** Daniel C Tosteson University Professor; Director, Joint Program in Nuclear Medicine, Harvard Medical School

**Ramsey D Badawi, PhD:** Assistant Professor of Radiology; PET Physicist, Division of Nuclear Medicine, Dana-Farber Cancer Institute

**Scott H Britz-Cunningham, MD, PhD:** Instructor in Radiology; Staff Physician, Division of Nuclear Medicine, Brigham and Women's Hospital

**Leonard P Connolly, MD:** Assistant Professor of Radiology; Assistant Director, Resident/Fellow Training, Joint Program in Nuclear Medicine, Staff Physician, Division of Nuclear Medicine, Children's Hospital

**Pierre D'Hemecourt, MD:** Lecturer in Orthopedics; Division of Sports Medicine, Primary Care Sports Medicine, Children's Hospital

**Marcelo F Di Carli, MD:** Assistant Professor of Radiology and Medicine; Director, Nuclear Cardiology, Division of Nuclear Medicine, Brigham and Women's Hospital

**Kevin J Donohoe, MD:** Assistant Professor of Radiology; Staff Physician, Division of Nuclear Medicine, Beth Israel Deaconess Medical Center

**Laura A Drubach, MD:** Instructor in Radiology; Staff Physician, Division of Nuclear Medicine, Children's Hospital

**David E Drum, MD, PhD:** Associate Professor of Radiology; Associate Physician, VA Boston Healthcare System

**Alan J Fischman, MD, PhD:** Professor of Radiology; Director, Division of Nuclear Medicine, Massachusetts General Hospital

**Victor H Gerbaudo, PhD:** Lecturer in Radiology; Director, Methodology and Operations, Division of Nuclear Medicine, Brigham and Women's Hospital

**Thomas C Hill, MD:** Associate Professor of Radiology; Radiologist, Division of Nuclear Medicine, Beth Israel Deaconess Medical Center

**Barbara J McNeil, MD, PhD:** Ridley Watts Professor of Health Care Policy; Division of Nuclear Medicine, Brigham and Women's Hospital

**Stephen C Moore, PhD:** Associate Professor of Radiology; Physicist, Joint Program in Nuclear Medicine, Brigham and Women's Hospital

**J Anthony Parker, MD, PhD:** Associate Professor of Radiology; Associate Director, Resident/Fellow Training, Joint Program in Nuclear Medicine, Radiologist, Division of Nuclear Medicine, Beth Israel Deaconess Medical Center

**S Ted Treves, MD:** Professor of Radiology; Director, Resident/Fellow Training, Joint Program in Nuclear Medicine, Chief, Division of Nuclear Medicine, Brigham and Women's Hospital, Chief, Division of Nuclear Medicine, Vice Chairman, Information Systems, Department of Radiology, Children's Hospital

**Annick D Van den Abbeele, MD:** Assistant Professor of Radiology; Director, Division of Nuclear Medicine/PET, Dana-Farber Cancer Institute

# Monday

April 29, 2002

7:00 Registration  
Continental Breakfast  
  
Moderator: S Ted Treves, MD

7:50 Introduction and Welcome  
Treves

8:00 Renal Scintigraphy  
Taylor

8:45 Questions

8:50 Lymphoscintigraphy  
Alazraki

9:35 Questions

9:40 Break  
  
Moderator: J Anthony Parker, MD, PhD

10:00 Fusion Imaging  
Alazraki

10:45 Questions

10:50 Renal Scintigraphy: Case Reviews  
Taylor

11:50 Questions

11:55 Lunch Recess

Moderator: Laura A Drubach, MD

1:10 Infection: Osseous  
Palestro

1:55 Questions

2:00 Scintigraphy in Sports Medicine  
Connolly  
D'Hemecourt

2:45 Questions

2:50 Break  
  
Moderator: Kevin J Donohoe, MD

3:10 Infection: Nonosseous  
Palestro

3:55 Questions

4:00 General Nuclear Medicine Case Reviews  
Britz-Cunningham

4:55 Questions

5:00 Adjourn

# Tuesday

The Charles Hotel  
Cambridge, Massachusetts

April 30, 2002

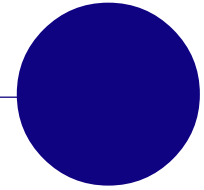
- 7:00 Continental Breakfast  
Moderator: Marcelo F Di Carli, MD
- 7:55 Introduction  
Treves
- 8:00 Optimizing Myocardial Perfusion SPECT  
Ziffer
- 8:35 Questions
- 8:40 Identifying and Preventing Artifacts in Cardiac SPECT  
Ziffer
- 9:10 Questions
- 9:15 Interpreting and Reporting Cardiac SPECT  
Maddahi
- 9:45 Questions
- 9:50 Break  
Moderator: David E Drum, MD, PhD
- 10:10 Starting an Acute Imaging Program  
Ziffer
- 10:35 Questions
- 10:40 Performing and Interpreting Myocardial Viability Imaging  
Di Carli
- 11:10 Questions
- 11:15 Incorporating Cardiac SPECT into Patient Management  
Maddahi
- 12:00 Questions
- 12:10 Lunch Recess  
Moderator: Marcelo F Di Carli, MD
- 1:30 Read with the Experts: Common and Challenging Everyday Cases  
Ziffer  
Maddahi  
Di Carli
- 2:55 Questions
- 3:00 Break  
Moderator: Stephen C Moore, PhD
- 3:20 PET Instrumentation  
Badawi
- 4:05 Questions
- 4:10 FDG Coincidence Imaging: Functional Anatomy of Normal and Abnormal Findings in Oncology  
Gerbaudo
- 4:55 Questions
- 5:00 Adjourn

# Wednesday

May 1, 2002

- 7:00 Continental Breakfast  
Moderator: Barbara J McNeil, MD, PhD
- 7:55 Introduction  
Treves
- 8:00 Thyroid and Parathyroid Imaging  
Sandler
- 8:30 Questions
- 8:35 PET: Patient Preparation, Interpretation Pitfalls and Reimbursement Issues  
Siegel
- 9:20 Questions
- 9:25 Evaluation of the Solitary Pulmonary Nodule  
Sandler
- 9:55 Questions
- 10:00 Break  
Moderator: S James Adelstein, MD, PhD
- 10:20 PET in Oncology I  
Wahl
- 11:05 Questions
- 11:10 PET in Oncology II  
Siegel
- 11:55 Questions

- 12:00 Lunch Recess  
Moderator: Rachel A Powsner, MD
- 1:15 Lymphoma  
Van den Abbeele
- 2:00 Questions
- 2:05 PET - Non-Oncological Applications  
Wahl
- 2:50 Questions
- 2:55 Break  
Moderator: Annick D Van den Abbeele, MD
- 3:15 PET Case Review and Expert Panel  
Fischman  
Wahl  
Siegel  
Sandler
- 4:45 Questions and Discussion
- 5:00 Adjourn



# Thursday

May 2, 2002

7:00	Continental Breakfast  Moderator: Thomas C Hill, MD
7:55	Introduction Treves
8:00	Brain Imaging Practica Van Heertum
8:50	Questions
8:55	Pulmonary Embolism: Interaction between VQ Scans and Spiral CT Gottschalk
9:25	Questions
9:30	Break  Moderator: S Ted Treves, MD
9:45	Pitfalls in VQ Scan Interpretation Gottschalk
10:15	Questions
10:20	Abdominal Imaging Van Heertum
11:05	Questions
11:10	Correlation of Skeletal Scintigraphy with CT and MRI in Nuclear Oncology Gottschalk
11:40	Questions
11:45	Adjourn

## The Boston Area

Boston, the capital and largest city of Massachusetts, is situated on a magnificent natural harbor opening onto Massachusetts Bay at the mouth of the Charles River. The city is steeped in history, culture, old-world charm, academic and medical excellence, and cosmopolitan sophistication.

In Boston's dynamic urban environment, high rise symbols of today harmonize with cherished emblems of the past. Evidence of Boston's prominence in American history is everywhere - the Old State House, the Old South Meeting House, Faneuil Hall, the Old North Church, Paul Revere's house, the Bunker Hill Monument, and the USS Constitution ("Old Ironsides") are but a few of the city's historic landmarks.

Boston boasts cultural and recreational activities for every interest. The Museum of Fine Arts, the Museum of Science, the John F Kennedy Library and Museum, The Children's Museum, the Computer Museum, and the New England Aquarium will enthrall the interested traveler. Newbury Street, Copley Square, Copley Place, Charles Street, and Faneuil Hall Marketplace beckon shoppers and encourage leisurely strolls. Fitness enthusiasts may start their day with a scenic run or walk along the Charles River, or through Boston Common and the Public Gardens.

Those who explore beyond downtown Boston will find Cambridge, home to Harvard University, Harvard Square, and the Massachusetts Institute of Technology, just across the Charles River. The historic towns of Plymouth, Concord, Lexington, and Salem, and the shorelines of Cape Ann and Cape Cod are within short drives of the city.

Boston comes alive at night. Course attendees can enjoy award winning restaurants, at which they may dine on local specialties of lobster and other fresh seafood as well as a wide range of eclectic, international cuisines. After dinner, Boston provides music lovers with choices ranging from Symphony Hall concerts of the Boston Symphony Orchestra and Boston Pops to jazz, folk, rock, rap, and blues performances at small clubs. The American Repertory Theatre, Boston Ballet, a number of comedy clubs, and much more await theatergoers.

### 2001

**Emergency Radiology: Pearls and Perils**  
December 15-17  
New York, NY

**Radiology Management  
In a New Era**  
May 19-22  
Boston, MA

### 2002

**MRI: Clinical Update and Practical Applications**  
February 18-22  
Kauai, HI

**MRI/CT Update**  
October 14-18  
Boston, MA

**Orthopedic Radiology**  
March 24-26  
Boston, MA

**Ultrasound/Women's Imaging**  
April 3-6  
Boston, MA

**2003  
MRI 2003: Clinical Update and  
Practical Applications  
Featuring a One-Day Symposium on  
Cardiovascular MRI**  
February 17-21  
Maui, HI

**BWH/MGH Radiology Review**  
April 22-26  
Boston, MA

## REGISTRATION INFORMATION

For specific tuition fees, see the registration form. All foreign payments must be made by a draft on a United States bank. If paying by check, make it payable to *Harvard Medical School* and mail with the completed registration form to: **Harvard MED-CME, PO Box 825, Boston, MA 02117-0825**. If paying by credit card, fax the completed registration form to

(617) 384-8686, or mail it to the above address. **Telephone registrations are not accepted.**

Inquiries should be directed to the above address, made by phone: (617) 384-8600,

Monday-Friday, 10 am to 4 pm (Eastern Time); or by e-mail: [hms-cme@hms.harvard.edu](mailto:hms-cme@hms.harvard.edu).

Upon receipt of registration a confirmation letter will be mailed to the address listed on the form.

## ACCOMMODATIONS

**Hotel rooms in Boston are limited. You are urged to make your reservations early.**

A limited number of rooms have been reserved at **The Charles Hotel**

(617) 864-1200 until **April 7, 2002**. Please specify that you are enrolled in the

**Clinical Nuclear Medicine** course to receive a reduced room rate.

A map of Boston listing local hotels will be sent with your confirmation of enrollment.

For further housing assistance, please call Boston Reservations (617) 332-4199.

## COURSE LOCATION

All sessions will be held at The Charles Hotel, One Bennett Street, Cambridge, MA,

(617) 864-1200.

## REFUND POLICY

A handling fee of \$60 is deducted for cancellation. Refund requests must be received by mail or fax one week prior to the course. No refunds will be made thereafter.

## TRAVEL

For information about reduced airfare, call Harvard MED-CME at (617) 384-8600,

Monday-Friday, 10 am to 4 pm (Eastern Time).

## Clinical Nuclear Medicine 2002

April 29 - May 2

Class # 222545

Physicians: \$700 (US)

Reduced Fee for Residents\*/Fellows in Training\*/Technologists: \$425 (US)

\*A letter of verification from Department Chairman must accompany application for a reduced trainee fee.

-PLEASE PRINT CLEARLY-

Full Name Last First Middle

Name on Badge Last First Middle

Degree (to be printed on badge) Print on badge? Yes No

Street City State Zip

Daytime Phone Fax Number

Email Address

Professional School Attended Year of Graduation

Profession

Principal Specialty Board Certified Yes No

Institutional Affiliation

**Form of Payment** (please check one)

Check is enclosed:

Please make your check payable to *Harvard Medical School* and mail it with this registration form to: **Harvard MED-CME, PO Box 825, Boston, MA 02117-0825**

Bill my credit card:  VISA  MASTERCARD

Credit Card Number \_\_\_\_\_ - \_\_\_\_\_ - \_\_\_\_\_ - \_\_\_\_\_

Expiration Date \_\_\_\_\_ Signature \_\_\_\_\_

Registrations paid by credit card can be faxed to 617-384-8686, or mailed to the above address.

Tuition Fee: \$ \_\_\_\_\_